



STANDARDS AND COMPLIANCES

ISO9001:2008 Quality Management System

IEC 297-1, 19" mounting standard

IEC 297-2, Overall cabinet dimensions

TS EN 61587-1 Standard

Environment Friendly

%100 recyclable



WIDE PRODUCT RANGE

D=1000 server cabinets offer 20 different size options in total; with W=600 and W=800 types and 10 different height options for each of these width options, ranging from 12U to 46U.

It provides solutions for all server and storage installation requirements, in optimum height and volume, thanks to the product range offering overall 20 different size options.

MAXIMUM **ACTIVE** VENTILATION



MAXIMUM **PASSIVE** VENTILATION



FRONT DOOR MODEL

Standard front door model for server cabinets is of 63% perforated convex type.

While 63% perforated structure provides maximum passive ventilation, double sided full length welded structure provides extra resistance.

The convex angled structure leaning forward provides resistance to the perforated area as well as an aesthetic view. It is also the most preferred front door model due to its extra distance provided at its front panels towards the front. 80% perforated type is introduced optionally.

Locking mechanism is of handled lock type.

Owing to the lock bolt and the rod mechanism, it presents a 3 point locking structure.

It provides maximum security by said 3 point locking structure.

Front doors with spring Loaded hinge system provides ease of use and installation by being detached and reinstalled, when required, without use of any tool.



REAR DOOR MODEL

Standard rear door model for server cabinets is of 63% perforated, solid type and vertically split double door model.

Rear doors allow maximum passive ventilation thanks to its 63% perforated structure.

Hinged structure of said vertically split double doors, in case where the back space of the cabinet is limited, enables easy opening of the door within short distances and easy intervention into the cabinet from the back.

80% perforated type is introduced optionally.

Locking mechanism is of handled lock type.

Owing to its rod mechanism, it presents a 2 point locking structure. It provides maximum security by said two point locking structure.

Standard rear doors with spring Loaded hinge system provide ease of use and installation by being detached and reinstalled within seconds without use of any tool.



SIDE DOOR MODEL

Standard side door model for server cabinets is of detachable, horizontally split double door type.

Easily detachable side doors have a locking mechanism of cylindrical **barrel lock**.

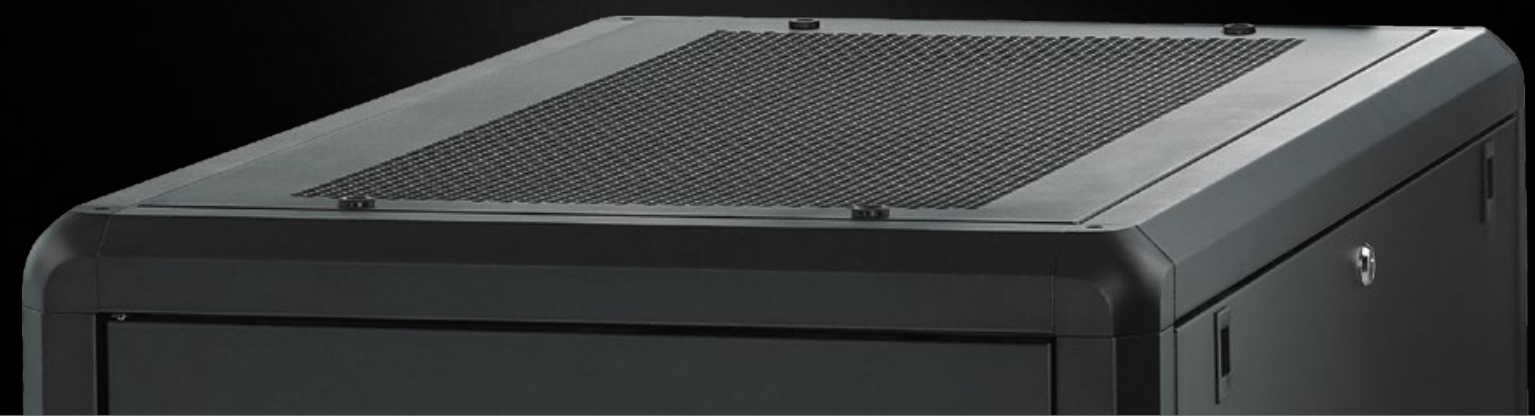
Thanks to the special design of horizontally split double doors, bottom door can not be detached unless the top door is detached. Thanks to the structure, **the lower door is also locked once the upper door is locked**.

Thanks to the **snap lock** on the side doors, these doors may remain closed on the cabinet without necessarily being locked.

In case of attached fan modules at the sides, **63%** perforated type horizontally split double side doors are introduced **optionally**.

Horizontally attached double door model facilitates detaching and transferring of the side doors in the course of installation and maintenance.

Among a **rich variety** of door options, side doors with a hinged system may be preferred when desired.



ROOF MODEL

Standard roof model of the server cabinets is **plane type** roof model.

Plane type roof model enables maximum passive ventilation with its **63% perforated** structure.

It enables the hot air to be **discharged rapidly** when the fan module is attached, thanks to its 63% perforation on the top.

Through the **embeddable structure** of the roof, profile lines of the cabinet are emphasized and the cabinet is profoundly decorative with the original view.

Pagoda type roof may be preferred optionally if desired.

GROUND CONTACT

Contact of the cabinet with the ground is ensured with 4 heavy duty pinion feet with **adjustable height** and **metal casing**, and with **heavy duty caster group 2 of which are with brakes and the other 2 of which are without brakes**, attached at the bottom corners of the cabinet, in all server cabinet configurations.



SPACIOUS INTERNAL VOLUME

It presents an internal volume of **1000mm** in depth, sufficient for housing devices of all kinds of trademarks, models and depths.

Besides, owing to its (19")3 structure, it provides optimum volume and cost solutions enabling **100% occupation** inside the volume.

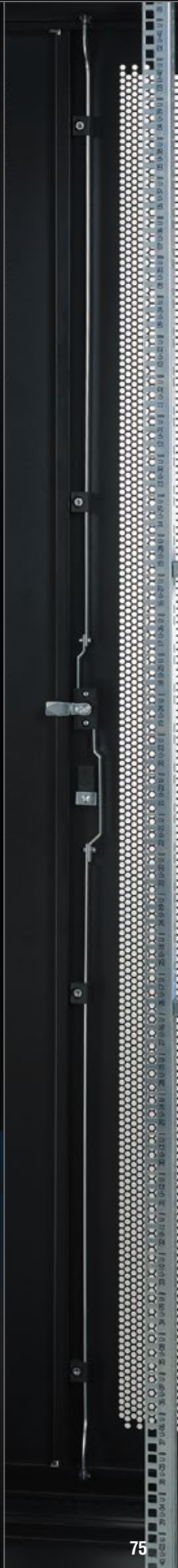


MAXIMUM SAFETY

Handled lock is a standard for front and rear doors; and front doors feature **3**, whereas rear doors feature **2** point lock system.



All front, rear and side doors are of lockable and **detachable** structure. Side doors have cylindrical barrel locking system.



GT S 600 x 1000 FREE STANDING CABINET

WIDTH W: 610mm

DEPTH D: 1000mm



COLOR OPTIONS



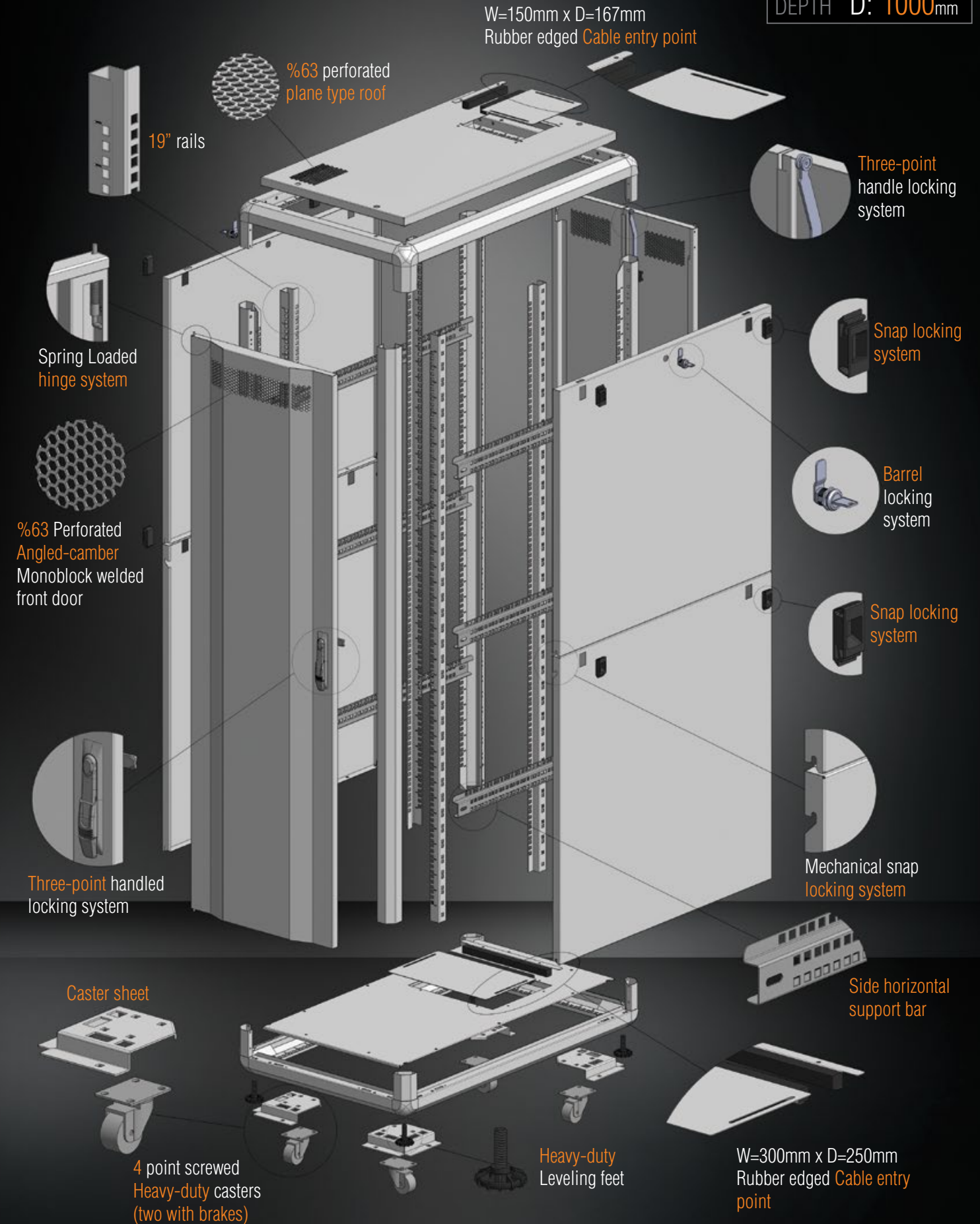
RAL 7035 LIGHT GREY



RAL 9005 BLACK

LOADING CAPACITY: 1000kg

EXPLODED VIEW



WIDTH W: 610mm

DEPTH D: 1000mm

CONSTRUCTION DRAWINGS

WIDTH **W:** 610mm
DEPTH **D:** 1000mm

W=600 DOOR OPTIONS

WIDTH **W:** 610mm
DEPTH **D:** 1000mm

W=1000 DOOR OPTIONS

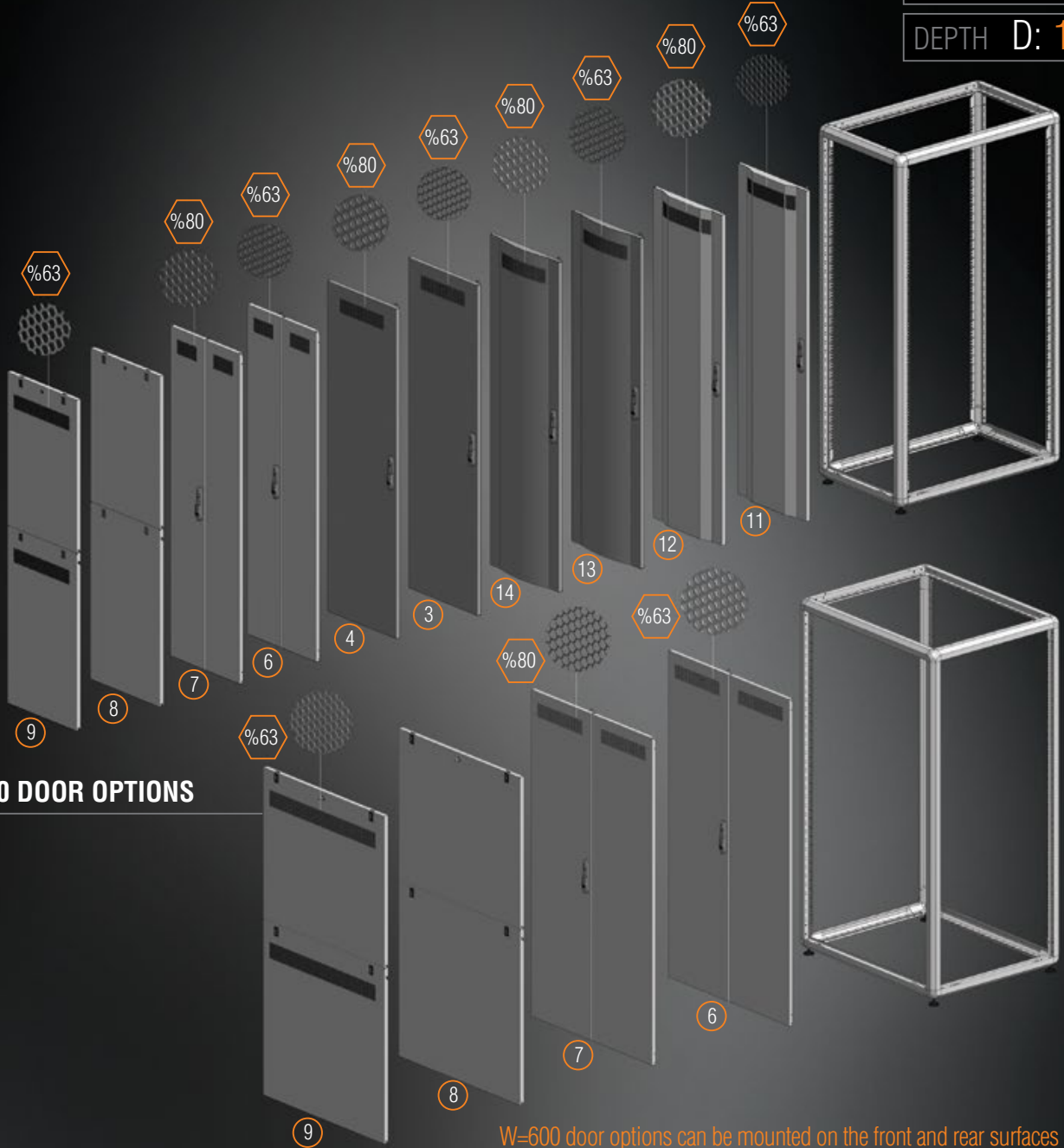
GT SERIES **SERVER** FREE STANDING CABINETS W=610mm D=1000mm

Product Code	Product Description	h Measurement (U)	Product Dimensions WxDxH (mm)	Width Between Rails	Depth Between Rails (mm)	h Measurement (mm)	Package Dimensions WxDxH (mm)	Number in the Package (pcs)	Product Net Weight (kg)	Product Gross Weight (kg)	Number on Pallet (pcs)	Pallet Dimensions WxDxH (mm)	Pallet Weight (kg)	Height with Leveling Feet and Caster (mm)
MR.GTS12U61.XX	12U W=610mm D=1000mm SERVER	12U	610x1000x694	19"	740	594	680x1080x849	1	42	48,3	2	680x1080x1698	97	754
MR.GTS16U61.XX	16U W=610mm D=1000mm SERVER	16U	610x1000x872	19"	740	772	680x1080x1012	1	49,6	57	2	680x1080x2024	114	932
MR.GTS20U61.XX	20U W=610mm D=1000mm SERVER	20U	610x1000x1050	19"	740	950	680x1080x1190	1	57	66	2	680x1080x2380	132	1110
MR.GTS22U61.XX	22U W=610mm D=1000mm SERVER	22U	610x1000x1139	19"	740	1039	680x1080x1280	1	61	70	2	680x1080x2560	140	1200
MR.GTS26U61.XX	26U W=610mm D=1000mm SERVER	26U	610x1000x1317	19"	740	1217	680x1080x1457	1	68,6	79	1	680x1080x1457	79	1377
MR.GTS32U61.XX	32U W=610mm D=1000mm SERVER	32U	610x1000x1583	19"	740	1483	680x1080x1723	1	80	90,4	1	680x1080x1723	90,4	1643
MR.GTS36U61.XX	36U W=610mm D=1000mm SERVER	36U	610x1000x1761	19"	740	1661	680x1080x1901	1	87,6	99	1	680x1080x1901	99	1821
MR.GTS40U61.XX	40U W=610mm D=1000mm SERVER	40U	610x1000x1939	19"	740	1839	680x1080x2079	1	95	107,6	1	680x1080x2079	107,6	2000
MR.GTS42U61.XX	42U W=610mm D=1000mm SERVER	42U	610x1000x2028	19"	740	1928	680x1080x2168	1	99	112	1	680x1080x2168	112	2088
MR.GTS46U61.XX	46U W=610mm D=1000mm SERVER	46U	610x1000x2206	19"	740	2106	680x1080x2346	1	106,6	120,5	1	680x1080x2346	120,5	2266

XX=Color Code, 22 means Light Grey RAL 7035 and 11 means Black RAL 9005, the code is added by the customer at the order.

The door width to be selected should be selected among the door options with the related surface dimensions.
When one of the door options is selected, it should be informed at the order with its selected surface.

The number 0 from the door options stands for "doorless".
The standard door options:
Front Door=11, Side Door=8, Rear Door=6.



W=600 door options can be mounted on the front and rear surfaces of the cabinet.
W=1000 door options can be mounted on the side surfaces of the cabinet.

GT S 800 x 1000 FREE STANDING CABINET

WIDTH W: 800mm
DEPTH D: 1000mm

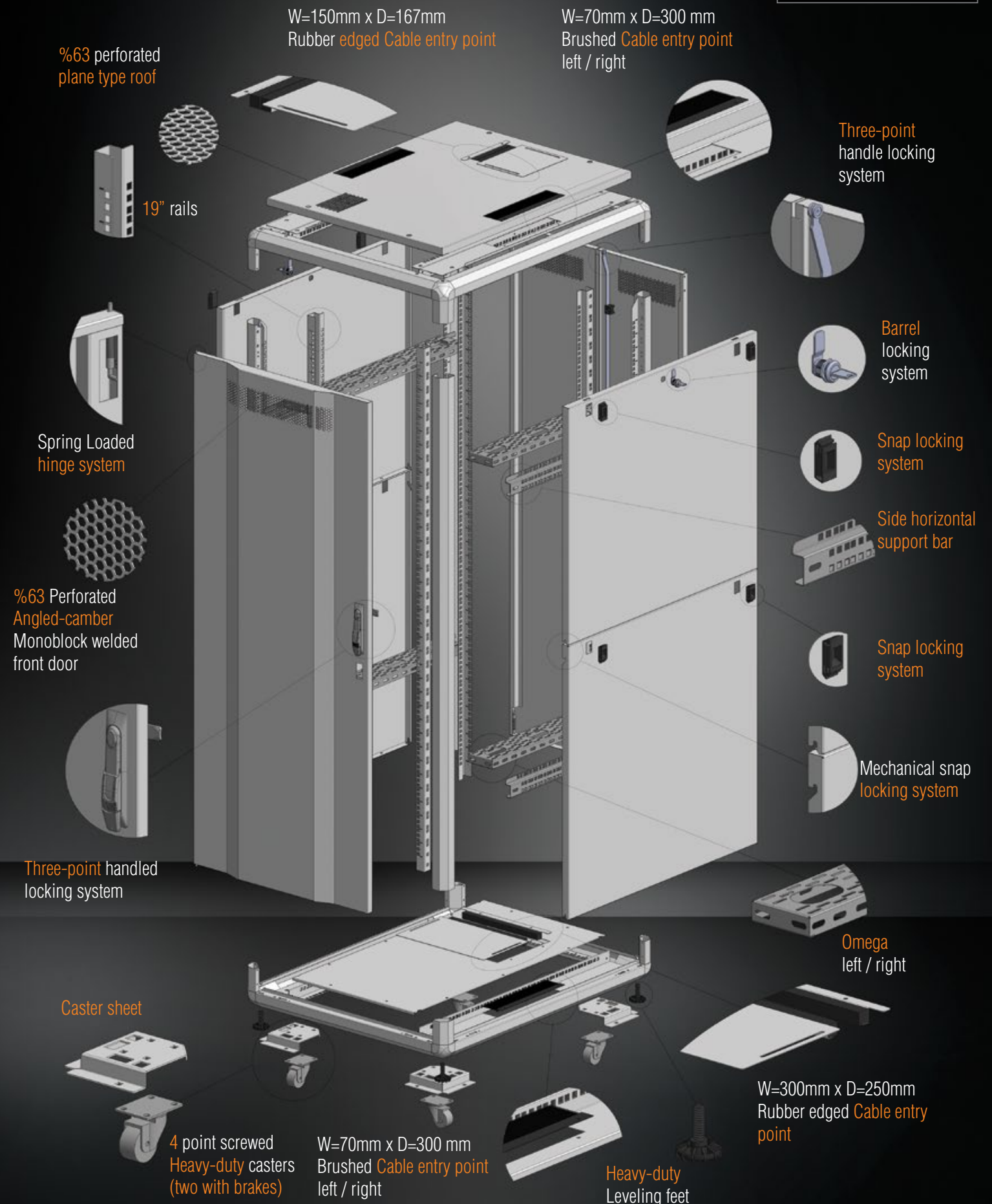


COLOR OPTIONS

RAL 7035 LIGHT GREY
RAL 9005 BLACK

LOADING CAPACITY: 1000kg

EXPLODED VIEW



WIDTH W: 800mm
DEPTH D: 1000mm

GT S 800 x 1000 FREE STANDING CABINET

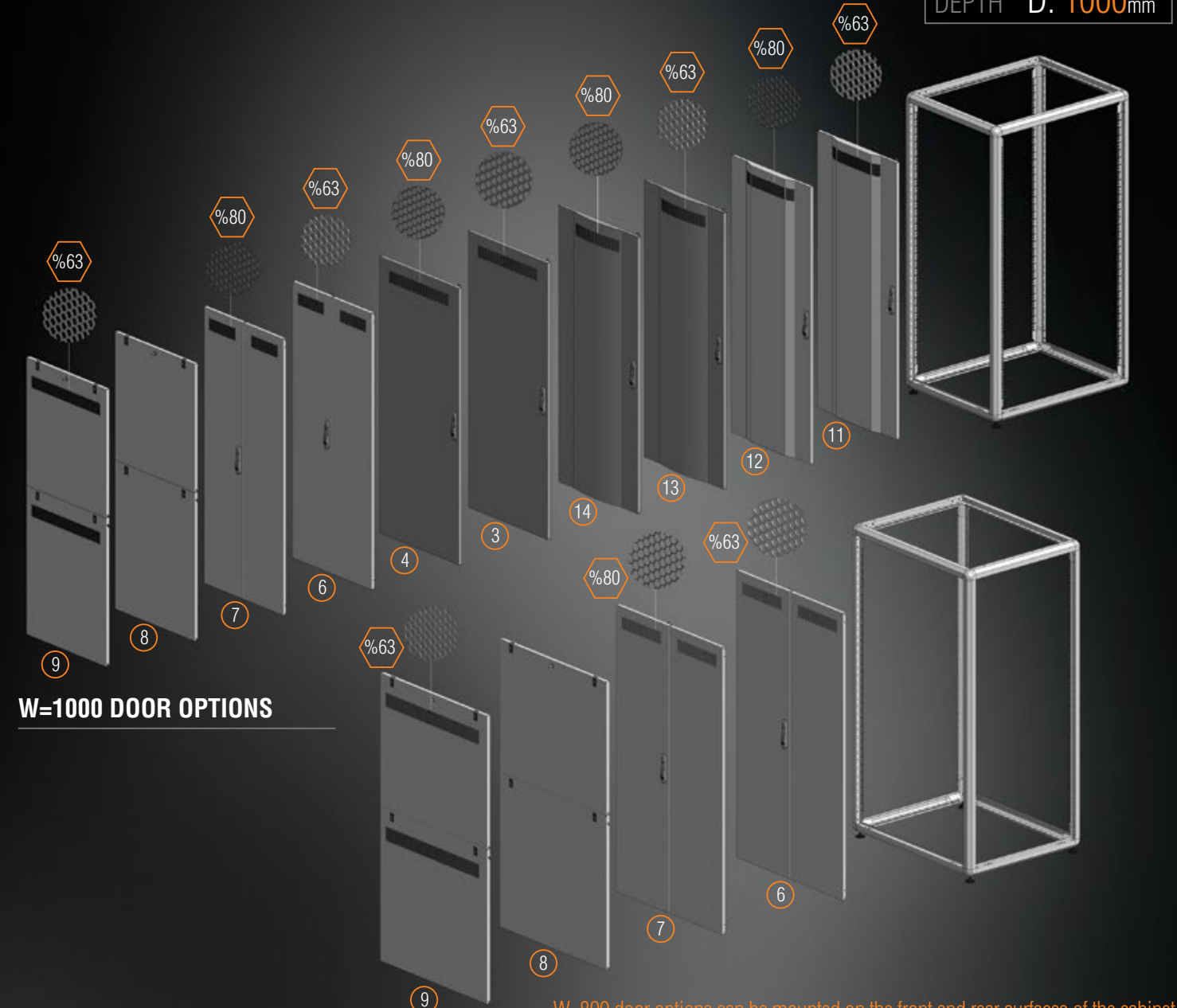
CONSTRUCTION DRAWINGS

WIDTH W: 800mm
DEPTH D: 1000mm



W=800 DOOR OPTIONS

WIDTH W: 800mm
DEPTH D: 1000mm



W=1000 DOOR OPTIONS

W=800 door options can be mounted on the front and rear surfaces of the cabinet.
W=1000 door options can be mounted on the side surfaces of the cabinet.

GT SERIES SERVER FREE STANDING CABINET W=800mm D=1000mm

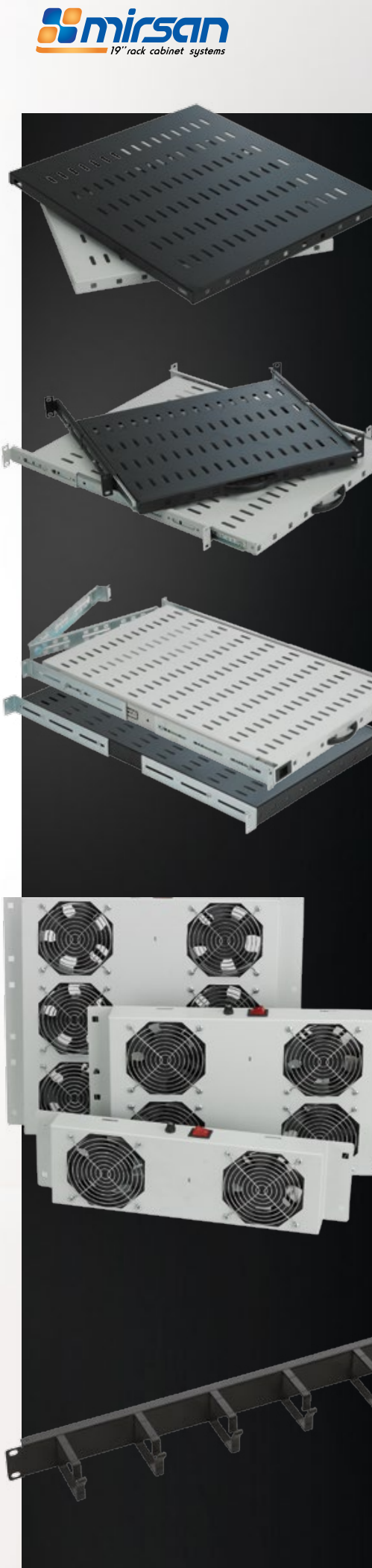
Product Code	Product Description	U Measurement (U)	Product Dimensions WxDxH (mm)	Width: Between Rails (mm)	Depth: Between Rails (mm)	U Measurement (mm)	Package Dimensions WxDxH (mm)	Number in the Package (pcs)	Product Net Weight (kg)	Product Gross Weight (kg)	Number on Pallet (pcs)	Pallet Dimensions WxDxH (mm)	Pallet Weight (kg)	Height with Leveling Feet and Caster Group (mm)
MR.GTS12U81.XX	12U W=800mm D=1000mm SERVER	12U	800x1000x694	19"	740	594	880x1080x849	1	54	62,3	2	880x1080x1698	125	754
MR.GTS16U81.XX	16U W=800mm D=1000mm SERVER	16U	800x1000x872	19"	740	772	880x1080x1012	1	64	73,6	2	880x1080x2024	147	932
MR.GTS20U81.XX	20U W=800mm D=1000mm SERVER	20U	800x1000x1050	19"	740	950	880x1080x1190	1	74	85	2	880x1080x2380	170	1110
MR.GTS22U81.XX	22U W=800mm D=1000mm SERVER	22U	800x1000x1139	19"	740	1039	880x1080x1280	1	78,7	90,5	2	880x1080x2560	181	1200
MR.GTS26U81.XX	26U W=800mm D=1000mm SERVER	26U	800x1000x1317	19"	740	1217	880x1080x1457	1	88,5	101,7	1	880x1080x1457	101,7	1377
MR.GTS32U81.XX	32U W=800mm D=1000mm SERVER	32U	800x1000x1583	19"	740	1483	880x1080x1723	1	103	116,6	1	880x1080x1723	116,6	1643
MR.GTS36U81.XX	36U W=800mm D=1000mm SERVER	36U	800x1000x1761	19"	740	1661	880x1080x1901	1	113	127,7	1	880x1080x1901	127,7	1821
MR.GTS40U81.XX	40U W=800mm D=1000mm SERVER	40U	800x1000x1939	19"	740	1839	880x1080x2079	1	123	138,7	1	880x1080x2079	138,7	2000
MR.GTS42U81.XX	42U W=800mm D=1000mm SERVER	42U	800x1000x2028	19"	740	1928	880x1080x2168	1	127,7	144,3	1	880x1080x2168	144,3	2088
MR.GTS46U81.XX	46U W=800mm D=1000mm SERVER	46U	800x1000x2206	19"	740	2106	880x1080x2346	1	137,5	155,3	1	880x1080x2346	155,3	2266

XX= Color Code, 22 means Light Grey RAL 7035 and 11 means Black RAL 9005, the code is added by the customer at the order.

The door width to be selected should be selected among the door options with the related surface dimensions.
When one of the door options is selected, it should be informed at the order with its selected surface.

The number 0 from the door options stands for "doorless".
The standard door options:
Front Door=11, Side Door=8, Rear Door=6.





GT SERIES MOST USED ACCESSORIES

FIXED SHELVES		GT SERIES CABINET MODELS							
Product Code	Product Description	GTV 600x600	GTV 600x800	GTV 600x1000	GTV 800x600	GTV 800x800	GTV 800x1000	GTS 600x1000	GTS 800x1000
MR.SBR60.XX	D=600 Fixed Shelf	•			•				
MR.SBR80.XX	D=800 Fixed Shelf		•			•			
MR.SBR100.XX	D=1000 Fixed Shelf			•			•	•	•
XX= Color Code, 02 means Light Grey RAL 7035 and 01 means Black RAL 9005, the code is added by the customer at the order.								COLOR OPTIONS	
								<input type="checkbox"/>	<input type="checkbox"/>
								RAL 7035 LIGHT GREY	RAL 9005 BLACK

SLIDING SHELVES		GT SERIES CABINET MODELS							
Product Code	Product Description	GTV 600x600	GTV 600x800	GTV 600x1000	GTV 800x600	GTV 800x800	GTV 800x1000	GTS 600x1000	GTS 800x1000
MR.HRK60.XX	D=600 Sliding Shelf	•			•				
MR.HRK80.XX	D=800 Sliding Shelf		•			•			
XX= Color Code, 02 means Light Grey RAL 7035 and 01 means Black RAL 9005, the code is added by the customer at the order.								COLOR OPTIONS	
								<input type="checkbox"/>	<input type="checkbox"/>
								RAL 7035 LIGHT GREY	RAL 9005 BLACK

HEAVY DUTY TYPE SERVER SHELVES		GT SERIES CABINET MODELS							
Product Code	Product Description	GTV 600x600	GTV 600x800	GTV 600x1000	GTV 800x600	GTV 800x800	GTV 800x1000	GTS 600x1000	GTS 800x1000
MR.SRS100.XX	Server Fixed Shelf			•				•	•
MR.SRH100.XX	Server Sliding Shelf			•				•	•
XX= Color Code, 02 means Light Grey RAL 7035 and 01 means Black RAL 9005, the code is added by the customer at the order.								COLOR OPTIONS	
								<input type="checkbox"/>	<input type="checkbox"/>
								RAL 7035 LIGHT GREY	RAL 9005 BLACK

19" FAN MODULES		GT SERIES CABINET MODELS							
Product Code	Product Description	GTV 600x600	GTV 600x800	GTV 600x1000	GTV 800x600	GTV 800x800	GTV 800x1000	GTS 600x1000	GTS 800x1000
MR.FAN20NXX	2fans,on/off controlled fan module	•	•	•	•	•	•	•	•
MR.FAN2ATXX	2fans,analog thermostat controlled fan module	•	•	•	•	•	•	•	•
MR.FAN40NXX	4fans, on/off controlled fan module	•	•	•	•	•	•	•	•
MR.FAN4ATXX	4fans, analog thermostat controlled fan module	•	•	•	•	•	•	•	•
MR.FAN60NXX	6fans, on/off controlled fan module	•	•	•	•	•	•	•	•
MR.FAN6ATXX	6fans, analog thermostat controlled fan module	•	•	•	•	•	•	•	•
MR.FAN80NXX	8fans, on/off controlled fan module		•	•		•	•	•	•
MR.FAN8ATXX	8fans, analog thermostat controlled fan module		•	•		•	•	•	•
MR.FAN100NXX	10fans, on/off controlled fan module			•			•	•	•
MR.FAN10ATXX	10fans, analog thermostat controlled fan module			•			•	•	•
MR.FAN120NXX	12fans, on/off controlled fan module						•	•	•
MR.FAN12ATXX	12fans, analog thermostat controlled fan module			•			•	•	•
XX= Color Code, 02 means Light Grey RAL 7035 and 01 means Black RAL 9005, the code is added by the customer at the order.								COLOR OPTIONS	
								<input type="checkbox"/>	<input type="checkbox"/>
								RAL 7035 LIGHT GREY	RAL 9005 BLACK

1U 19" HOOK ORGANIZER		GT SERIES CABINET MODELS							
Product Code	Product Description	GTV 600x600	GTV 600x800	GTV 600x1000	GTV 800x600	GTV 800x800	GTV 800x1000	GTS 600x1000	GTS 800x1000
MR.OKP1U19.XX	1U 19" cable organizer panel with 5 hooks	•	•	•	•	•	•	•	•
XX= Color Code, 02 means Light Grey RAL 7035 and 01 means Black RAL 9005, the code is added by the customer at the order.								COLOR OPTIONS	
								<input type="checkbox"/>	<input type="checkbox"/>
								RAL 7035 LIGHT GREY	RAL 9005 BLACK



VERTICAL CABLE MANAGEMENT ORGANIZERS		GT SERIES CABINET MODELS							
Product Code	Product Description	GTV 600x600	GTV 600x800	GTV 600x1000	GTV 800x600	GTV 800x800	GTV 800x1000	GTS 600x1000	GTS 800x1000
MR.ODK22UXX	22U Vertical Cable Organizer				•	•	•		•
MR.ODK26UXX	26U Vertical Cable Organizer				•	•	•		•
MR.ODK32UXX	32U Vertical Cable Organizer				•	•	•		•
MR.ODK36UXX	36U Vertical Cable Organizer				•	•	•		•
MR.ODK40UXX	40U Vertical Cable Organizer				•	•	•		•
MR.ODK42UXX	42U Vertical Cable Organizer				•	•	•		•
MR.ODK46UXX	46U Vertical Cable Organizer				•	•	•		•
XX= Color Code, 02 means Light Grey RAL 7035 and 01 means Black RAL 9005, the code is added by the customer at the order.								COLOR OPTIONS	
								<input type="checkbox"/>	<input type="checkbox"/>
								RAL 7035 LIGHT GREY	RAL 9005 BLACK

19" SIDE MOUNTING APPARATUS		GT SERIES CABINET MODELS							
Product Code	Product Description	GTV 600x600	GTV 600x800	GTV 600x1000	GTV 800x600	GTV 800x800	GTV 800x1000	GTS 600x1000	GTS 800x1000
MR.YNK60.ZN	D=600 horizontal support bar, galvanized	•			•				
MR.YNK80.ZN	D=800 horizontal support bar, galvanized		•			•			
MR.YNK100.ZN	D=1000 horizontal support bar, galvanized			•			•	•	•
MR.YNC.ZN	horizontal mounting rail, galvanized		•	•		•	•	•	•

PLUG MODULES		GT SERIES CABINET MODELS							
Product Code	Product Description	GTV 600x600	GTV 600x800	GTV 600x1000	GTV 800x600	GTV 800x800	GTV 800x1000	GTS 600x1000	GTS 800x1000
MR.PRZ1U6S.SC	1U 19" 6 sockets plug with fuse	•	•	•	•	•	•	•	•

CASTER GROUP		GT SERIES CABINET MODELS							
Product Code	Product Description	GTV 600x600	GTV 600x800	GTV 600x1000	GTV 800x600	GTV 800x800	GTV 800x1000	GTS 600x1000	GTS 800x1000
MR.TKR5525	Free standing type caster group, (2 with brakes)	•	•	•	•	•	•		

FIXING HARDWARE		GT SERIES CABINET MODELS							
Product Code	Product Description	GTV 600x600	GTV 600x800	GTV 600x1000	GTV 800x600	GTV 800x800	GTV 800x1000	GTS 600x1000	GTS 800x1000
MR.KFS20	M6 cage nut set 1set= 20pcs.	•	•	•	•	•	•	•	•
MR.KFS50	M6 cage nut set 1set= 50pcs.	•	•	•	•	•	•	•	•